

Elevated Readiness for State Universities

Resources for Producing Viable Proposals for Student Success Grants



Michelle Burke

Michigan Center for Adult
College Success

Mia Murphy

Michigan Association of State
Universities

Jamie Storey

Michigan College Access
Network



Grants Galore!



Quick Start

Self-assessment, planning, elevation of student voice. Helping colleges hone their strategy for student success.

subset of other categories



College Success

Three levels of grants that help colleges scale student success reforms and increase graduation rates.

\$12 million



Barrier Removal – Direct to Students

Emergency grants and other direct aid to students to eliminate financial barriers to completion.

\$7 million



Barrier Removal – Growing Institutional Capacity

Developing supportive policies and practices for students struggling to meet basic needs.

\$5 million



Reconnect Community Action Grants

Growing community support and partnership for post-secondary learning pathways.

\$10 million



Elevated Readiness Grant

\$250,000 grant has been awarded by the Office of Sixty by 30 to The Michigan Center for Adult College Success to assist institutions in program development and proposal preparation for Student Success Grants (pool of \$45 million is available).



The Michigan Center
for Adult College Success
Collaborate. Innovate. Transform.

The Center is partnering with MASU & MCAN to provide technical assistance to public universities producing grant proposals.

MCCA is hosting similar Elevated Readiness activities for community colleges. We are coordinating efforts where appropriate.

Several Student Success grant cycles are in play through November 2024. Additional cycles are expected to be announced into 2025.





Elevated Readiness Needs Assessment

❖ 12 universities expressed interest in assistance

- 10 would “welcome additional support”
- 2 “facing obstacles and support would be useful”

❖ Top requests

- Connection with institutions that have implemented similar projects
- Assistance with developing Logic Model and assessment/evaluation
- Budget and resource planning guidance for project sustainability
- Grant writing/proposal editing assistance





Tips for Proposals

Focus on
Student
Success
(Asset-based
lens)

Build on Proven
Practices

Provide
Evidence and
Data



Student Success Grant requests should be for **Student Success** Initiatives.

- While increased enrollment is a component of reaching Sixty by 30, the **support and persistence** of enrolled students is paramount.
- Goals should be related to **significant change** in the number of students completing a credential.
- Include **clear evaluation criteria** that reflects the focus on student success.

Include a clear model for change and evaluation criteria.

Even if not explicitly asked for on the application form, the change model should be evident within the project narrative.



The background is a dark blue gradient. It is filled with numerous grey paper airplanes scattered across the frame, mostly pointing towards the right. On the right side, there is a large yellow star. A dashed yellow line forms a semi-circle at the bottom right, partially overlapping the star and the text below.

Projects should be based on proven practices.

Replicate activities that have worked elsewhere.
Scale up proven initiatives on your own campus.

Proven Practices



COMPLETE COLLEGE AMERICA

College Success Grant Examples and Resource Guide

Prepared by request for the Office of Sixty by 30, Michigan Department of Lifelong Education, Advancement, and Potential



Go Big

Only 18% of students who start at Michigan's CCs earn bachelor's degrees (80% aim for this goal)

Transform CC and 4-year partnerships. Facilitate transfer and support to completion of bachelor's degree.

Expand CPL, create Academic Maps, Minimize Credit Loss. Establish Transfer Student Success Center.



Barrier Removal-Direct to Students

Financial barriers hinder students closest to degree attainment. “Finish Line” scholarship will support completion.

Adopt a data-driven approach. Analyzing financial need, academic progress, proximity to graduation. Prioritize students to support.

Engage advising, support services, financial aid. Monitoring and evaluation plan (award amounts, term and degree completion rates).



Barrier Removal-Direct to Students

Analysis of existing programs and if needs are being served.
Need to enhance several support programs.

Student Emergency Fund, Food Pantry,
Co-pays for Counseling and Health Centers,
Housing Assistance, Completion Grants

OK to fund several initiatives under one grant, if the need and evaluation process is demonstrated.

Evidence and Data

- Requests should explain:
 - This is the need (backed by data)
 - This is what we plan to do (proven practices)
 - How this will increase the number of students persisting and completing (projected impact)



Evidence and Data

- **Two types of data**
 - Your students
 - The intervention itself
- **Qualitative data** are still data!
- **Surveys** can be to staff about usage patterns, or cover the whole campus rather than users of a service
- **Cite literature/studies** on the interventions you want to use.

Evidence and Data

- **Use real numbers** whenever possible to illustrate the needs of the students you will serve.
- Ground your proposals in **successful practices** from other institutions (with data they share) or the internal data of initiatives you want to replicate or scale up.
- Show how this fits into overall institutional planning.
- **Show analysis** of internal processes and why/how they should change.
- Don't just say you did a survey, **show the results** of the survey and why the information matters.
- When setting numeric goals for improvement, **explain** how you determined that number is an attainable and relevant goal.



Clearly Connect Budget to Narrative

Many fundable items are described in proposals, but not reflected in the budget.

Ask for what you need!



Don't be Frugal!



- Fund for success!
- Support those consultants and project managers
- Provide operating budgets for project implementation
- For sustainability, describe how you will measure impact to justify and phase in future funding

Proofread and Edit!

- Flow
- Incomplete answers
- Lots of text that doesn't really address the application question
- Budget doesn't match the narrative
- Proposal isn't aligned with scoring rubric





A few more tips...

- Read the Sixty by 30 FAQs – updated regularly
- Review the Sixty by 30 resources (webinars, CCA examples)
- Review the application PDFs carefully
- Visit Sixty by 30 Office Hours! Tuesdays 12:00-1:00 p.m.
- Get familiar with the EGrAMS portal well before the deadlines

<https://www.michigan.gov/mileap/higher-education/sixty-by-30/grants>

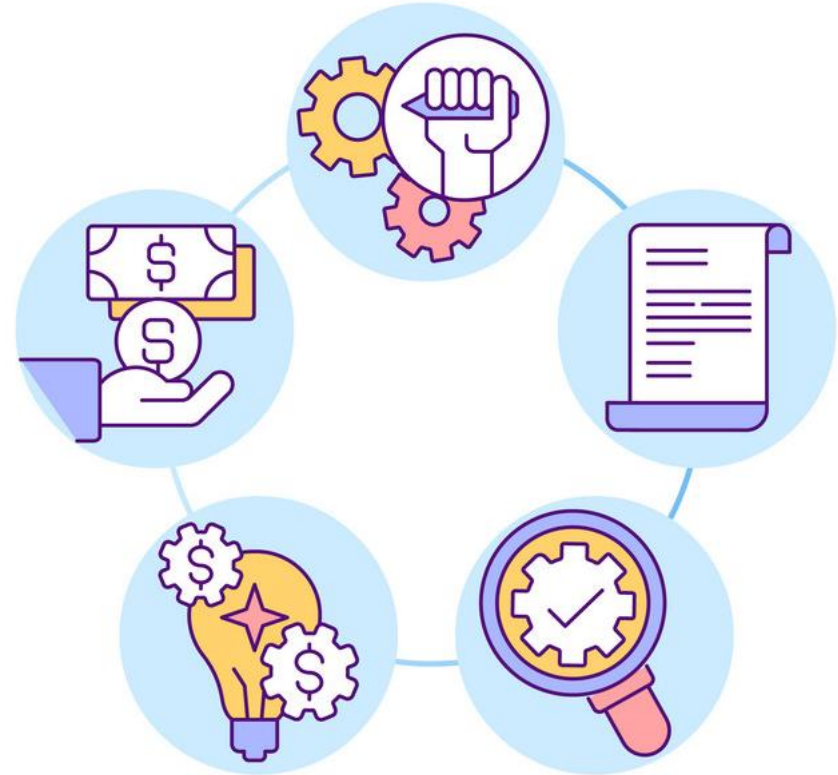


Elevated Readiness Assistance

- ❖ Office Hours (Tuesdays 9-10 a.m., Thursdays 3-4 p.m.)

mcacs.talentfirst.net/events-calendar/

- ❖ Consultations upon request (facilitators, subject matter experts, grant writers and editors)
- ❖ Grant Writing Workshops
- ❖ Resource Guides and Webinars





The Michigan Center for Adult College Success



Questions?

